

Instructions



Shuffle MH1

Mia Hamborg

2010

Congratulations on choosing this Shuffle table, designed in 2010 by Mia Hamborg. We hope you will enjoy using this table and follow these instructions to ensure correct assembly. If you have any questions or comments, please do not hesitate to contact us by mail on:

info@andtradition.com

Shuffle MH1 Mia Hamborg 2010

Please read these instructions carefully and retain them for future reference to ensure that the product is used correctly. For your own safety, please study each step of this instruction manual first. &Tradition is not responsible for any faults or damages caused by not following these instructions correctly. Do not modify this product in any way.

Contents

- A Table top
- B Table building block (B1-B5)
- C Base
- D Table pillar
- E 4 × Screws

Tools needed

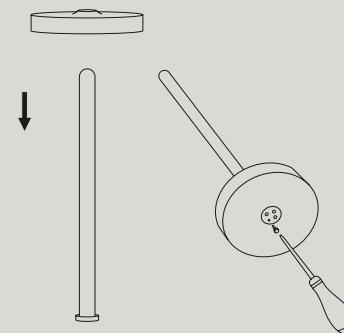
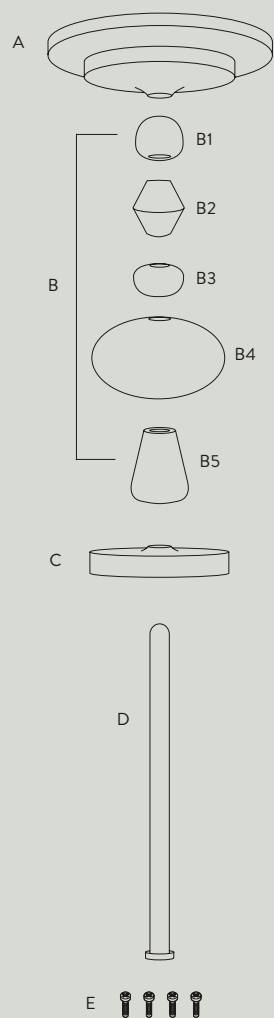
- Medium Philips-head (PH) screwdriver for assembly.

User suggestions

The Shuffle table is intended as a flexible piece of furniture that can serve many uses. The building blocks can be combined to place the table top at different heights, making it user friendly for all ages. Visit our website for more inspiration: www.andtradition.com

Safety precautions

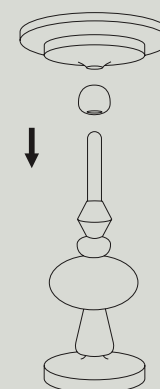
- Dispose of plastic bag from packaging and do not allow children to play with it.
- Children aged 0-5 years should not be allowed to stack the table elements.
- The table is only intended for interior use.
- Never stand or sit on the table.
- Do not attempt assembly of product if you are not competent to do so yourself.
- Always ensure the table top is clear before changing the assembly of the table.



Step 1

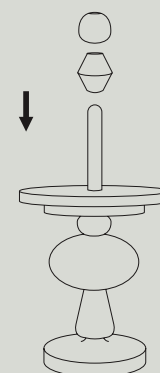
Push the table pillar (D) through the hole in the base (C) as shown in the drawing. Use the four included screws (E) to fasten the bottom of the pillar to the base.

Apply pressure to the bottom of the pillar while tightening the screws so that they grip into the soft MDF base. This ensures a tight and level fit.



Step 2

Build up your table by gently placing one wooden blocks (B1-B5) on the pillar at a time. Never let a block drop onto the pillar or the below building block as this can result in damage to the painted surface.



Step 3

Construct the table so that the table top is at an appropriate height for its intended use.

Cleaning instructions

For daily care it is recommended to dust the furniture with a soft cloth. Lacquered and stained wood can be cleaned with a soft cloth wrung in a mild solution of lukewarm water and a universal cleaning detergent. Always follow the wood grains and always dry with a soft dry cloth immediately after cleaning. Avoid use of abrasive cleaning agents and aggressive cleaning detergents as this will damage the surface of the lacquered or stained wood.